



Welcome to Old Brook Barn

Old Brook Barn is located in approximately 23 acres in a rural location in the village of Navestock, Essex. With easy access to the M25 and other major roads, it is the perfect venue to relax and unwind in the beautiful English countryside, with the added benefit of being within easy reach of London and surrounding areas.

The barn dates back to the 17th century and forms part of Brook Farm. Having been sympathetically refurbished to a high modern standard, using old traditional beams and authentic materials throughout. The natural characteristics of the barn lend themselves to create the perfect atmosphere and ambience for any event.

The grounds create the perfect backdrop for photographs. Exclusively yours to enjoy with the stunning natural brook, decking area, courtyard, willow trees, meadow fields and secret garden, you could not wish for a better setting on your special day.

Your love story begins here



The Venue

Exclusive use of our beautifully restored barn and stunning grounds.

Licensed for civil ceremonies and partnerships, offering a choice of locations, inside and out, throughout the year.

Capacity to seat up to 150 guests.

Ample space for dancing and entertainment.

Fully licensed bar serving fine champagne, cocktails, beers, ales, wines and spirits.

Option to use our beautiful honeymoon suite.

Extensive car parking.



Venue Hire Rates

<i>Mid Season</i>	<i>Saturday & Sunday</i>	£6,000
April & October	<i>Friday</i>	£ 5,800
<i>Peak Season</i>	<i>Saturday & Sunday</i>	£6,500
May to September	<i>Bank Holidays</i>	£ 6,500
	<i>Friday</i>	£ 6,200
<i>Twilight hire</i>	<i>4pm - midnight (8 hour hire)</i>	£ 5,500
<i>Party hire</i>	<i>6pm - midnight (6 hour hire)</i>	£2,500 *
<i>Day hire</i>	<i>2pm-5pm (3hour hire)</i>	£1,500 **

* £1,000 min bar spend applies.
** This hire price excludes wedding receptions and is subject to availability.
*** T wilight hire extra hour available £ 500.00 per hour

Venue hire includes the use of:

- Tables
- Chivari lime wash chairs
- Seating for up to 150 guests, 150+ for the evening reception
- Shabby chic easel
- PA system
- Wireless microphone
- Fully staffed licensed bar
- Wedding coordinator prior to and on the day
- Heating and lighting
- Cleaning
- iPad/iPhone connectors

Terms of hire include:

- An initial deposit of £1500.00 is required to secure the booking.
- 50% of the remaining balance is due 6 months prior to the event date.
 - The final balance is to be received one month prior to the event.
- Catering **MUST** be supplied by one of our recommended caterers.
 - For our full Terms & Conditions please contact us.
- All prices are correct at time of publishing and are inclusive of VAT at the standard rate (deposits are non-refundable).



Civil Ceremonies, Partnerships & Blessing Ceremonies

Secret Garden

Wedding Ceremony outside in our *Secret Garden*,
maximum capacity 150+ guests.
£500

Chivari chairs, 6 bay trees with ivory bows, water, tissues and
wedding coordination prior to, and on the day included.



Court Yard

Wedding Ceremony outside in our *Courtyard* area.
Maximum capacity 120 guests.
£500

Chivari chairs, 6 bay trees with ivory bows, water, tissues and
wedding coordination prior to, and on the day included.



The Barn

Wedding Ceremony inside the *The Barn* downstairs.
Maximum capacity 96 guests seated plus 12 standing on the upstairs gallery.
£500

Wedding Ceremony upstairs in our *Gallery* area maximum capacity 120 guests seated.

Chivari chairs, water, tissues and wedding coordination
prior to and on the day included.



White Isle Carpet to hire £150.00.
All prices are inclusive of VAT and correct at the time of publishing and may be subject to change.

White draping, white isle runner, candelabras, silver lanterns, 'I Do' letters and chandelier provided by *Love Light*.
Flowers by our recommended florist *Halo Blossom*. Marquee by *Ambassador Marquee*. Contact suppliers directly for a quote.

Civil Ceremonies & Partnerships

Please contact the *Central Team* in Chelmsford to confirm a registrar for your wedding date.

You will be able to book a registrar up to two years in advance.

Tel: 0345 603 7632

Email: Registration.CentralTeam@essex.gov.uk

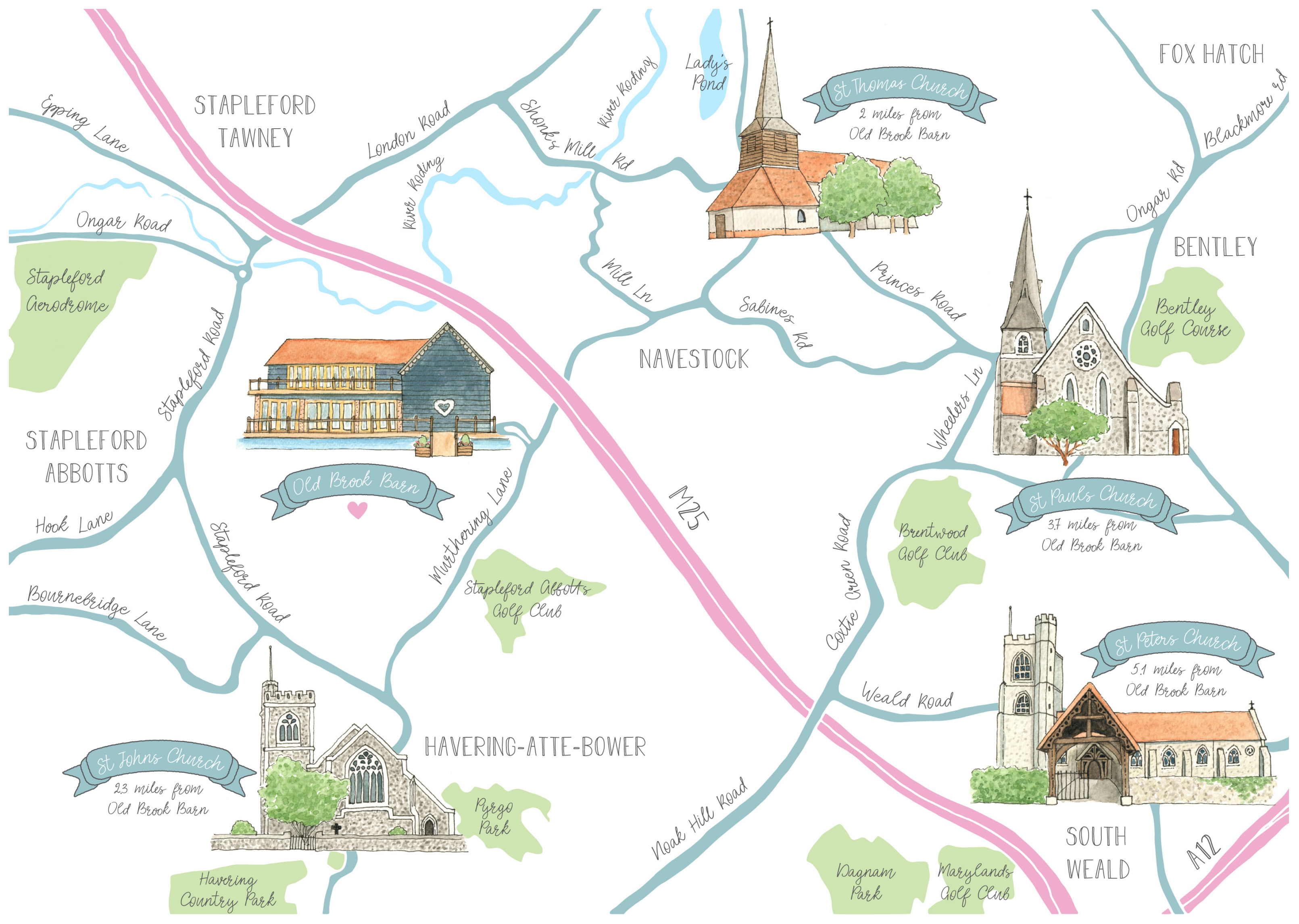


Church Weddings

We have a list of beautiful churches around the area, local to *Old Brook Barn*.



Bentley St. Paul's on our map, 3.7 miles from the barn.



STAPLEFORD
TAWNEY

Stapleford
Aerodrome

STAPLEFORD
ABBOTTS

St Johns Church
2.3 miles from
Old Brook Barn

Havering
Country Park

Pyrgo
Park

HAVERING-ATTE-BOWER

Stapleford Abbots
Golf Club

Old Brook Barn

NAVESTOCK

St Thomas Church
2 miles from
Old Brook Barn

FOX HATCH

BENTLEY

Bentley
Golf Course

St Pauls Church
3.7 miles from
Old Brook Barn

Brentwood
Golf Club

St Peters Church
5.1 miles from
Old Brook Barn

SOUTH
WEALD

Wagnam
Park

Marylands
Golf Club

A12

M25

OLD BROOK BARN

Civil Ceremony Example day



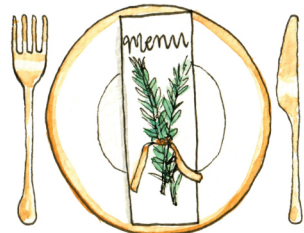
2pm Ceremony in the Secret Garden



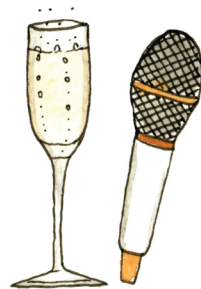
2:30pm Photo's



2:30pm Reception Drinks



4:00pm First Call for Dinner



6:30pm Speeches



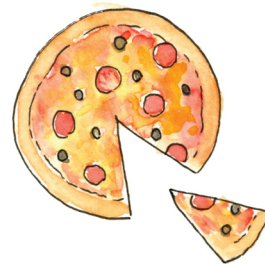
7:50pm Cut the Cake



7:55pm Throw Bouquet



8pm First Dance



9pm Evening Food



Carriages at Midnight

OLD BROOK BARN

Church wedding Example day



12pm Church Ceremony at St Paul's Church



1pm Photo's outside Church



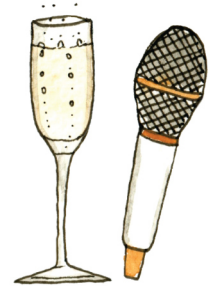
2pm Reception at Old Brook Barn



2pm Reception Drinks



4pm Wedding Breakfast



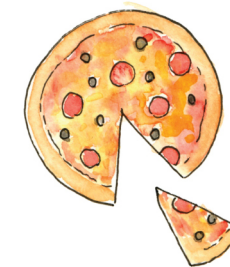
6pm Toasts & Speeches



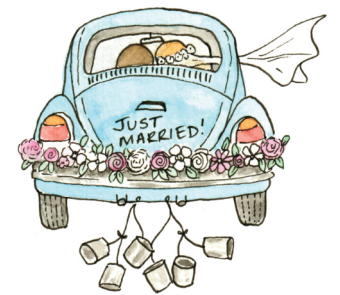
7:50pm Cutting the Cake



8pm First Dance



9pm Evening Food



Carriages at Midnight



Stay With Us

Old Brook Barn now offers our couples a beautiful *Honeymoon Cottage*.
With views across to the secret garden entrance, what better place to
prepare for your wedding day and stay on your wedding night.

The cottage offers a self-catering style bed & breakfast.
A continental breakfast will be provided with fresh fruit juices, cereals,
patisseries and a complimentary bottle of Prosecco on us!

Please enquire for further information.





Our Food & Drink

Catering at Old Brook Barn, we ask that you chose from our recommended caterers, two of the finest in the South-East of England.

www.limeberriycatering.co.uk

www.theurridub.uk

www.masalacreation.com

www.kanchans.co.uk

Included in their pricing is all the table linen, cutlery, glassware and service on the day.

For evening party & street food style catering, we recommend the following:

www.themobilepizzeria.com

www.doughanddeer.co.uk

[curryonnaanstop-Instagram](#)

www.acatering.co.uk

www.currysquad.com

[Safskitchen-Instagram](#)

Please note that these caterers can only be used for evening parties, not a sit down meal with us.
Please speak to us if you require further details.

We offer a range of *drink* packages that best suit your wants and needs.
Our in house bar is well stocked with a wide selection of drinks.

Old Brook Barn will provide the bar, venue staff and drinks as per our drinks package and bar list, subject to your requirements.

For more details please refer to our drinks menu, supplied separately.





Special Touches

At *Old Brook Barn* we have a great relationship with a range of fantastic suppliers that will help to make your day extra special.

Music

www.phjr.co.uk/the-entertainment-agency
www.tonyrobertsmusic.co.uk
www.djtonynicholls.co.uk
www.haifajordan.com
[@staceylee](#)

Styling

For styling of the barn i.e dance floor, drapes etc we do ask that you use Love Light Entertainment, who are leading professionals in the industry:
www.lovelightentertainment.co.uk.

Bridal

www.amoraebridal.co.uk

Photographers

www.anestabroadphotography.co.uk
www.dominicwhiten.co.uk
www.mattwing.co.uk
www.farries-photography.co.uk
www.mariewoottonphotography.co.uk
www.im-art.co.uk
www.jesssoperphotography.com

Hair & Make-up

www.JaimieAttfield.co.uk
www.essexmakeup.co.uk
www.hairandmakeupbykirsty.co.uk

Videographers

www.rideoutfilms.com
www.muchlovefilms.co.uk
www.thirdreelfilms.co.uk
www.simplyweddingmovies.co.uk

Photobooth

www.thevintagephotoboothcompany.co.uk

Cake

www.finessecakes.com
www.bridies-cakes.co.uk

Florist

www.minouxflowers.co.uk
www.petalandwild.co.uk
www.littletinshed.com
www.haloblossom.co.uk
www.thewillowsflowers.co.uk
www.rockmywedding.co.uk

Balloons

www.bestdayevents.co.uk

Printing

www.bychloelouiseart.co.uk

Props

www.vowedandamazed.co.uk
www.anthologyvintagehire.com
www.vintagestylehire.co.uk



Travel & Hotel Information

Local Coach Companies

- www.brentwoodcoaches.co.uk

Contact Kay - can provide 29 seat coach

Tel: 01277 233144

- www.dansluxurytravel.com

Contact Cyril - 16-49 seat coach

Tel: 0800 0680 197

- www.momentumcoachhire.com

Contact Dan - 16, 24 and 49 seat coach

Tel: 0800 0567848

- www.layermarneytower.co.uk

NOTE Only a RML2398 1960 Route Master can gain access to the farm

Tel: 01206 330784

- www.timebus.co.uk

Regal Four - single decker, 30 seater bus

Tel: 01727 866248

- http://lodgescoaches.co.uk/vintage_coach_fleet.php

Tel: 01245 231262

Taxi Numbers

- *Carteret Executive* Car Service

www.carteret.ltd

T: 01277 562324

- *Ongar Taxi's* Collier Row

Tel: 01708 332211

- *Havering Cars* Romford

Tel: 01708 606060

- *Swift Mini Cabs* Romford

Tel: 01708 720000

- *Ongar Taxi's* Ongar

Tel: 01277 365300

- *ABC Taxi* Ongar

Tel: 01277 216060

- *Lavelor Taxi* Epping

Tel: 01992 577888

- *Treble Twenty* Brentwood

Tel: 01277 202020

- *Shenfield Taxis* Shenfield

Tel: 01277 225544

Local Accommodation

- *Mary Green Manor*

www.marygreenmanor.co.uk Tel: 01277 225252

Distance: 5.9 miles

- *Holiday Inn* Brentwood

www.ihg.com Tel: 0871 423 4896

Distance 6.1 miles

- *The Blue Boar* Abridge

www.theblueboarabridge.co.uk Tel: 01992 812 110

Distance 6.2 miles

- *Premier Inn* Brentwood

www.premierinn.com Tel: 0871 527 8142

Distance 6.6 miles

Other forms of transport

By underground Central Line

Theydon Bois 8 miles

Epping 8.2 miles

Debden 8.5 miles

From these stations you can take a local minicab for approximately £15.00 - £20.00 each way

By rail

Romford Station: 5.7 miles

Brentwood Station: 6.8 miles

By air

Nearest airports are Stansted (25 miles), London City Airport (15.6miles), Luton (43 miles), from there you can continue on by road or rail.

How To Find Us

From the M25 Junction 28

(Brentwood)

- At Junction 28, take the A1023/A12 exit to Chelmsford/Brentwood
- At the roundabout, take the 4th exit onto Brook Street/A1023
- Continue to follow A1023
- At the roundabout, take the 1st exit onto Ongar Road/A128
- Continue to follow A128
- Go through 5 roundabouts
- At the roundabout, take the 1st exit onto Coxtie Green Road
- Turn right onto Dytchleys Lane
- Dytchleys Lane turns slightly right and becomes Dytchleys Road
- Keep left at the fork
- Turn left onto Horseman Side
- Turn right onto Old Road
- Turn left onto Murthering Lane
- Destination will be on the right

Distance 7.0 miles; time approx 15 mins

From the M11 Junction 5 (Debden)

- Exit M11 Junction 5
- Bear to the right hand lane, cross the dual carriage way and turn right
- At the roundabout, take the 1st exit onto Abridge Road/A113
- Continue to follow A113
- Go through 2 roundabouts
- Turn left onto Abridge Road/B172
- Take the 1st right onto Epping Lane
- Turn left onto London Road/A113
- Turn right onto Shonks Mill Road
- Turn right onto Church Road
- Turn right onto Murthering Lane
- Destination will be on the right

Distance 9.2miles; time approx 20 mins

From Chelmsford A414

- At the roundabout, take the 2nd exit onto London Road/A1114
- At the roundabout, take the 3rd exit onto Greenbury Way/A414
- Continue to follow A414
- Go through 2 roundabouts
- At the roundabout, take the 1st exit onto High Street
- Continue onto Coopers Hill
- At the roundabout, take the 2nd exit onto Stanford Rivers Road/A113
- Continue to follow A113
- Turn left onto Shonks Mill Road
- Turn right onto Church Road
- Turn right onto Murthering Lane
- Destination will be on the right

Distance 18.2miles; time approx 30 mins

From A12 Gallows Corner

(Colchester Road)

- Head northeast on Colchester Road/A12 toward Whitelands Way
- Turn left onto Gooshays Drive
- At the roundabout, take the 2nd exit onto Noak Hill Drive
- At the roundabout, take the 2nd exit onto Noak Hill Road
- Go through 1 roundabout
- Turn left onto Church Lane
- Continue onto Goatswood Lane
- Turn left onto Horseman Side
- Continue onto Tysea Hill
- Turn right onto Murthering Lane
- Destination will be on the right

Distance 5.4miles; time approx 12 mins



At *Old Brook Barn*,
dreams really do come true.

The perfect country venue for your special day.





Old Brook Barn
Brook Farm
Murthering Lane
Navestock
Essex
RM4 1HL

www.oldbrookbarn.co.uk info@oldbrookbarn.co.uk
0774 711 6100